

# THE PACKAGING FORUM



## ANNUAL REPORT

# 2025





**WE ARE AN OFFICIAL DROP OFF POINT FOR THE FOOD & BEVERAGE CARTON RECYCLING SCHEME**

SCAN THE QR CODE TO FIND OUT MORE!

VISIT OUR WEBSITE  
fbcarton.recycling.kiwi.nz

THE PACKAGING FORUM

# WORKING TOGETHER FOR A SUSTAINABLE PACKAGING INDUSTRY

GOVERNANCE	4	
HIGHLIGHTS	11	
SOLUTIONS	13	
MEMBERS	20	
FINANCE	22	

PO Box 58110 Botany  
Auckland 2163  
New Zealand

[packagingforum.org.nz](http://packagingforum.org.nz)

## REFLECTIONS ON THE YEAR

### A MILESTONE FOR THE PACKAGING FORUM

The past year has been pivotal for The Packaging Forum, marked by significant growth and expansion of our voluntary stewardship programmes. Our continued collaboration with members to support their needs and ambitions for 2025 has been central to our progress.

As New Zealand's largest member-led packaging industry organisation, the Forum continues to be at the forefront of resource recovery, packaging sustainability and industry collaboration. With over 250 member organisations, we continue to lead efforts in voluntary product stewardship schemes and other initiatives that supports our purpose of facilitating the development of viable, sustainable end of life solutions to waste material.

It's no secret that New Zealand's packaging sector is navigating a complex sustainability transition, compounded by local infrastructure limitations, regulatory/policy uncertainty, and a challenging economic environment. These factors have put pressure on both our members and consumers alike. Government policy shifts during the reporting period (April 2024 – March

2025) have further complicated the achievement of the Forum's, and our members', ambitious 2025 goals. Key regulatory changes, such as kerbside collection standardisation (February 2024) and ongoing plastic phase-out regulations, have had a lasting impact. Throughout this period, we have remained committed to advising and guiding our members to help them navigate these challenges.

In the face of these hurdles, the Forum's collaborative approach with members and the broader industry has been essential. Our evidence-based positioning and ability to pivot in response to changing circumstances have ensured that we continue to maintain confidence among our members and stakeholders. The rapid launch and recent expansion of our Caps and Lids Recycling Scheme is a clear testament to this approach.

Over the past year, our established voluntary product stewardship schemes have made notable strides. Soft plastic collections expanded into several new regions, and we successfully launched a six-month kerbside collection trial programme in Nelson with 1,000 households. The Food and

Beverage Carton Recycling Scheme has also grown significantly, with nearly 100 collection points across the country—culminating in the Southern Hemisphere's most southern collection point at Scott Base in Antarctica. Meanwhile, the Glass Packaging Forum has focused on strategy to ensure the scheme remains both relevant and effective in the light of decreasing tonnage to market and changing policy signals. Contestable funding was limited during this time with unspent funds being aligned with the following years workplan.

Since the launch of the Caps and Lids Recycling Scheme in 2024, the pilot programme has experienced a period of fast growth, and things are looking positive for the programme to become a full Extended Producer Responsibility (EPR) scheme in the future. What started as a programme with 16 stores and four recycling hubs as collection points, has grown to 55 collection points (33 stores and 22 hubs).

A key highlight of the year was the successful launch of our inaugural "Summit: Navigating the Challenging Landscape" in September 2024, which coincided with the unveiling of the Caps and

Lids Recycling Scheme. Over 100 members and industry stakeholders gathered for the event, engaging with international experts in EPR and recycling; as well as interactive panel sessions including selected local experts, members and industry partners.

The Forum's strength continues to lie in our dual role as both an industry leader and a staunch advocate for our members. A prime example of this was our leadership in co-designing the Plastic Packaging Product Stewardship Scheme (PPPS) in partnership with the NZ Food & Grocery Council. This initiative represents the culmination of over two years of consultation with a wide array of stakeholders, including Forum members, industry players, and government representatives. The report is currently with the Ministry for the Environment to determine next steps.

Looking ahead, we are reviewing our strategic direction and exploring ways to continue supporting our members and the industry's sustainability journey. This is something we want to engage all our members with as, ultimately, this is a member-led organisation

that exists to advocate on behalf of its members to ensure they're able to fulfil their obligations to their stakeholders.

I would like to take this opportunity to extend my heartfelt thanks to The Packaging Forum team for their unwavering dedication throughout the year. I am also deeply grateful to our scheme managers, the members of our scheme steering committees, advisory groups, and the FAR Committee, whose volunteer efforts have played a critical role in strengthening our programmes. And thanks as always, to our all members for their contribution to our organisation and the programmes we operate.

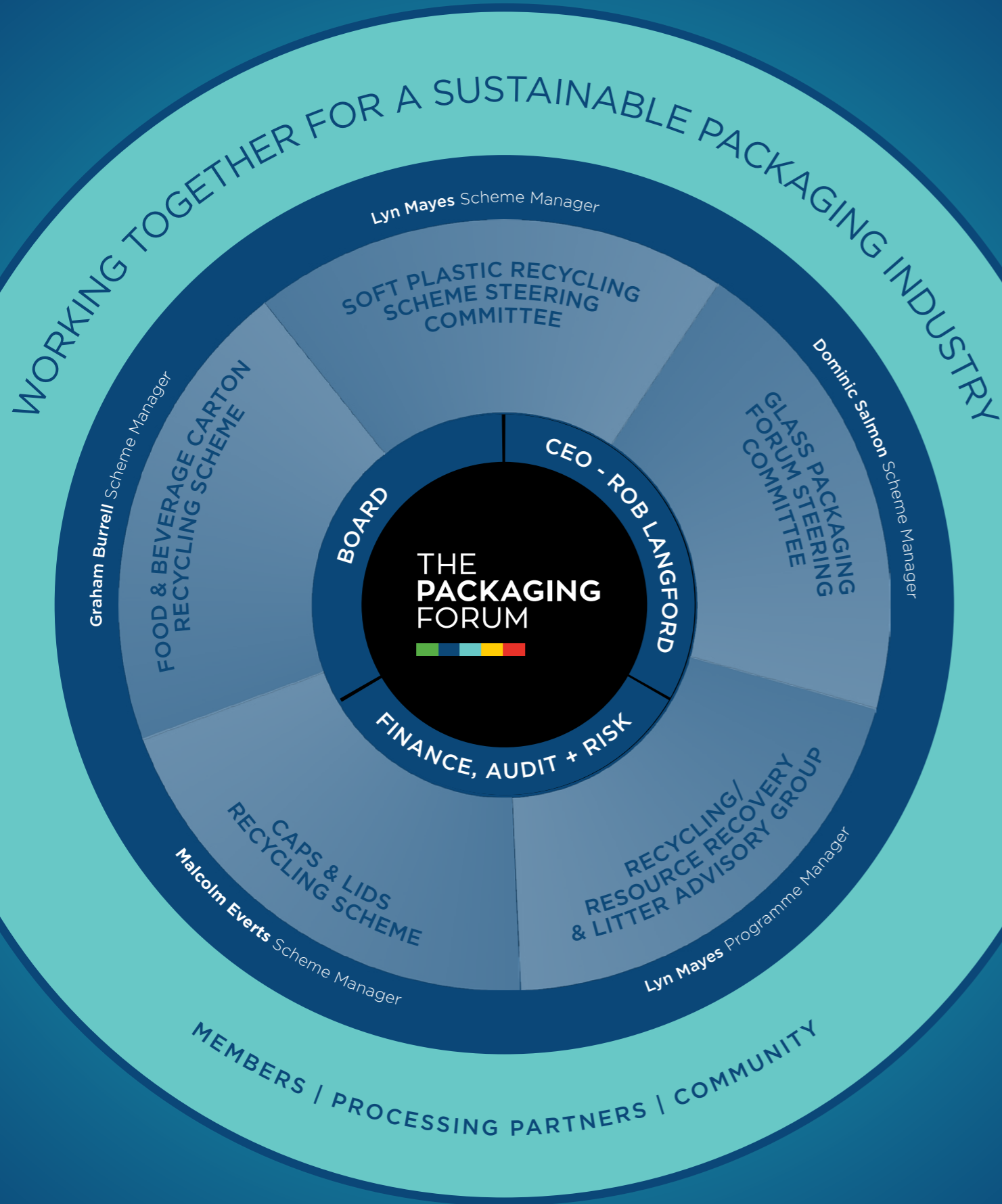
A special thank you goes to my fellow Board members for their continuous support and guidance during what has been yet another challenging year. Your time and commitment are invaluable, and I appreciate the sacrifices you make in balancing your full-time roles with your Board responsibilities.

Finally, I would like to acknowledge Rob Langford, our former CEO, for his work during the last reporting period, particularly in setting up the Caps and Lids Recycling Scheme pilot programme.

As I step down from my role as Chair of the Packaging Forum Board in August, I want to express my deep gratitude to all the Board members I've worked with over the past six years. Your support and contributions have been crucial to our success, and I am thankful for the opportunity to have served alongside such dedicated individuals.

Many thanks,

Nick Baker  
Chair, Packaging Forum Board



PACKAGING FORUM **BOARD FY24/25**



**Nick Baker**  
Chair  
Visy Recycling



**Rosie Cotter**  
Fonterra



**Gavin Fong**  
PlusPac Packaging



**Jamie Galloway**  
Foundation Coffee



**Debra Goulding**  
Foodstuffs



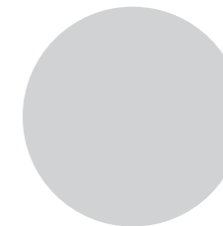
**Chris Grant**  
5R Solutions



**Carmen Housten**  
SIG Group ANZ



**Keri-Ann Martin**  
Nestlé



**Nicola Voice**  
Woolworths



**Rob Langford**  
CEO  
until 28.02.25



**FINANCE AND RISK COMMITTEE**

- Nick Baker [Visy Recycling](#)
- Terri Bray [Independent Advisor](#)
- Gavin Fong\* [Pluspac Packaging](#)
- Keri-Ann Martin [Nestlé](#)

**THE PACKAGING FORUM 2024/25 SOFT PLASTIC RECYCLING SCHEME STEERING COMMITTEE**

- Colin Benzie [Caspak Products](#)
- Dylan Brown [PepsiCo](#)
- Stuart Burt [Ampcor Flexibles](#)
- Jamie Galloway [Foundation Coffee](#)
- Debra Goulding\* [Foodstuffs](#)
- Christopher Jury [Goodman Fielder](#)
- Robert Lethbridge [Griffins](#)
- Mao Mao [Kmart](#)
- Keri-Ann Martin [Nestlé](#)
- Robin McKay [TCL Hunt](#)
- Scott McKinnon [George Weston Foods](#)
- Nicola Voice [Woolworths](#)

**THE PACKAGING FORUM 2024/25 GLASS PACKAGING FORUM COMMITTEE**

- Penny Garland [Visy Recycling](#)
- Debra Goulding [Foodstuffs](#)
- Chris Grant\* [5R Solutions](#)
- Nick Keene [Hospitality NZ](#)
- Julian Sidebottom [Asahi Beverages](#)
- Sara Tucker [Lion](#)
- Nicola Voice [Woolworths](#)
- Hamish White [DB Breweries](#)

**THE PACKAGING FORUM 2024/25 FOOD & BEVERAGE CARTON RECYCLING SCHEME**

- Su Chong [Lamipak](#)
- Rosie Cotter [Fonterra](#)
- Suzanne Cowling [Danone Nutricia NZ](#)
- Debra Goulding [Foodstuffs](#)
- Carmen Houston\* [SIG Group ANZ](#)
- Christopher Jury [Goodman Fielder](#)
- Kitty Sandoval [Suntory Oceania](#)
- Nicola Voice [Woolworths](#)
- Andrew Whitson [Sanitarium](#)

**THE PACKAGING FORUM 2024/25 RESOURCE RECOVERY & LITTER GROUP**

- Nick Baker\* [Visy Recycling](#)
- Graham Burrell [Tetra Pak](#)
- Gavin Fong [PlusPac Packaging](#)
- Francis Morton Jones [Transcontinental Packaging](#)
- Jenna Pepper [Coca-Cola Europacific](#)
- Veronica Thompson [Restaurant Brands](#)
- Nicola Voice [Woolworths](#)

**THE PACKAGING FORUM 2024/25 CAPS & LIDS ADVISORY GROUP**

- Charmaine Dhalwanth [Danone](#)
- Debra Goulding [Foodstuffs](#)
- Deanne Holdsworth [PACT Group](#)
- Christopher Jury [Goodman Fielder](#)
- Amavi Mey [Fonterra](#)
- Clarke Truscott [Coca Cola Europacific](#)
- Abbie Watson [Wadding Solutions](#)

\* Chair

# ADVOCACY

## OUR VISION

To be the trusted voice of packaging in New Zealand by 2025

## OUR PURPOSE

We exist to facilitate the development of viable, sustainable packaging solutions for New Zealand, to help protect it for future generations.

## OUR FOCUS

Implementing solutions that are:

- Business-led
- Evidence and data-based
- Sustainable by design and support New Zealand
- Consider the full supply chain from producer to end-user
- Simple and easy for consumers to do the right thing
- Practicable, and easy for business to integrate into everyday operations
- Designed to enable positive social, economic, and environmental outcomes for New Zealand

## OUR COMMUNITIES

- Members
- Scheme and industry partners
- Industry stakeholder organisations, and processing partners
- External stakeholders and interested parties
- Government (local and central) policy makers Ministry officials

## WHAT WE HAVE UNDERTAKEN

Continued to **advocate** on behalf of members to ensure they're able to fulfil their obligations to their stakeholders while operating sustainably

**Supported** our members with packaging design and implementation that considers sustainable end of life solutions

Established **authoritative voice** for sustainable packaging in New Zealand

**Expanded existing member-funded recycling schemes**, while launching a successful pilot scheme for caps and lids to mitigate consequences of regulatory changes

**Provided updates to members, and hosted webinars** for members with key industry stakeholders to educate and inform on Government policy, changes to industry requirements and other events that impact our members' organisations

**Hosted** a range of **member and industry events**, including the inaugural Packaging Forum **Summit** to engage directly with membership and key stakeholders, including industry and community representatives, and international experts on extended product stewardship programmes

**Utilised the latest data and research** from local and international sources to support our focus and inform members. Increased networking opportunities on behalf of members

**Initiated international memberships** to ensure we are sharing best practice programmes and research with our peers for the betterment of our Schemes and members; **represented the Forum at international speaking engagements**

Positioned as a **collaborative partner** with industry stakeholder partners

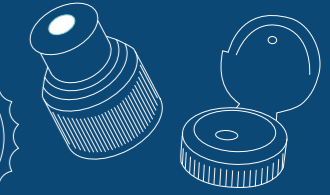
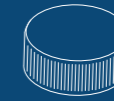
**Being an industry advocate and Government-appointed policy co-designer** (co-leading Plastic Packaging Product Stewardship Scheme with the NZ Food & Grocery Council)

THE PACKAGING FORUM

HIGHLIGHTS

# MEMBERSHIP REMAINS STABLE 264 TPF MEMBERS

WE CONTINUE TO MAKE A DIFFERENCE BY FUNDING WASTE REDUCTION & RESOURCE RECOVERY SOLUTIONS



**\$129,946**

ALLOCATED TO PROJECTS THAT REDUCE WASTE GENERATION, INCREASE RESOURCE RECOVERY IN PUBLIC PLACES & AT EVENTS, AND FUND EDUCATION AND AWARENESS



**55**

COLLECTION POINTS (20 IN 2024)

**18**

BRANDS

**9**

TONNES OF MATERIAL COLLECTED



THE REPORTING PERIOD SAW A DECLINE IN GLASS TO MARKET, AS WELL AS THE RECOVERY AND RECYCLING RATES

**225,147**

GLASS TO MARKET

**70%**

RECOVERY RATE

**60%**

RECYCLING RATE

**16% ↓**

**4.9% ↑**

**5.4% ↑**



**1,300,000** CARTONS RECYCLED

**99**

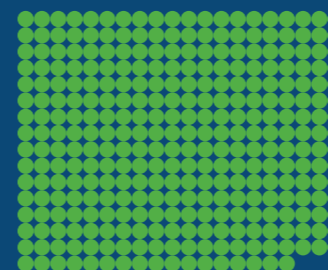
DROP OFF LOCATIONS (72 IN 2024)

**12**

MEMBERS - REPRESENTING 66% OF THE FOOD AND BEVERAGE CARTON INDUSTRY

SOFT PLASTIC RECYCLING CONTINUES TO GROW

**317** DROP OFF POINTS (291 IN 2024)



**87%** OF NEW ZEALANDERS HAVE ACCESS TO SOFT PLASTIC RECYCLING

**187**

SCHEME MEMBERS FUNDING THE SCHEME (201 IN 2024)

**82%**

OF THE FOOD & GROCERY INDUSTRY'S POST-CONSUMER SOFT PLASTIC PACKAGING MARKET

**1003**

TONNES POST-CONSUMER SOFT PLASTIC COLLECTED

**154,000,000**

= BAGS OR WRAPPERS TO BE RECYCLED INTO 102,000 POSTS

**510KM**

OR OF FENCING (THE DISTANCE BETWEEN WAIRARAPA & WAIUKU)

PROCESSING CAPACITY ON THE INCREASE

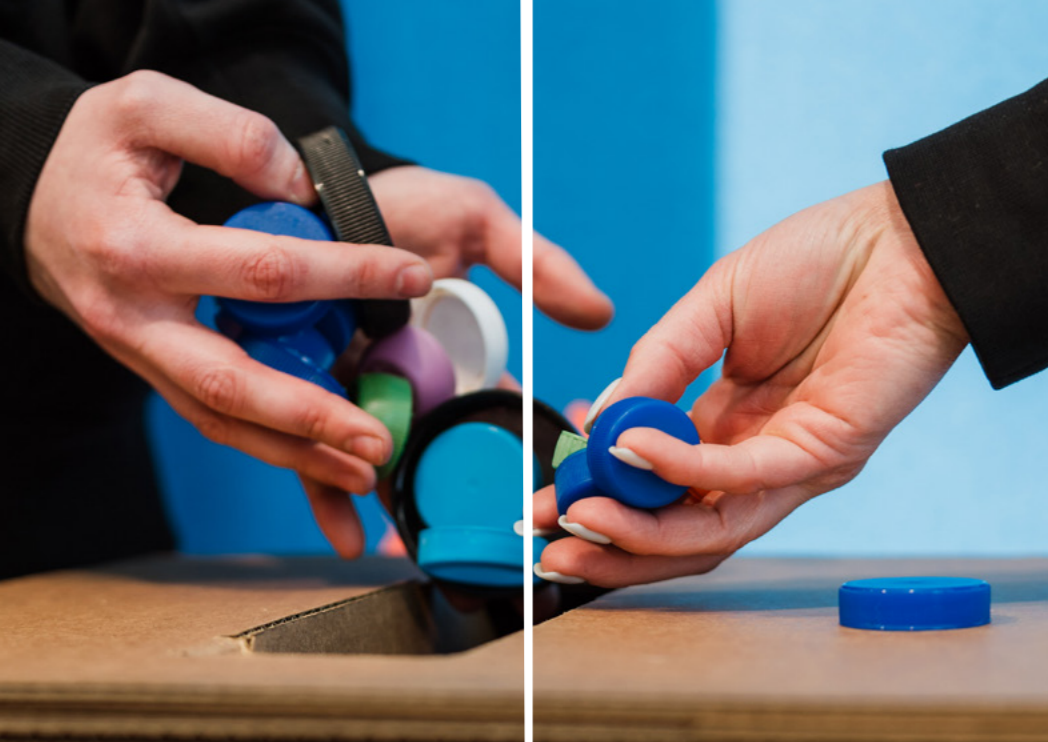
**100%**

OF POST-CONSUMER SOFT PLASTIC COLLECTED IS PROCESSED HERE IN NEW ZEALAND BY OUR PROCESSING PARTNERS FUTURE POST + SAVEBOARD



THE PACKAGING FORUM CONTINUES TO **ADVOCATE THAT COUNCILS INSTALL RUBBISH AND RECYCLING BINS IN PUBLIC PLACES** TO PROVIDE PEOPLE WITH THE OPPORTUNITY TO DISPOSE OF THEIR WASTE WHEN OUT AND ABOUT RESPONSIBLY. OUR RESEARCH CONTINUES TO SHOW THAT **WELL DESIGNED AND COLOUR CODED "BINFRACSTRUCTURE" MAKES IT EASIER FOR NEW ZEALANDERS AND TOURISTS VISITING OUR COUNTRY TO RECYCLE.**

FIGURES REPRESENTED ARE FROM REPORTING PERIODS 1 APRIL 2024 TO 31 MARCH 2025. NOTE: REPORTING PERIOD FOR GPF IS JULY TO JUNE, TO ALIGN WITH GPF ACCREDITATION REPORT 2024-2025.



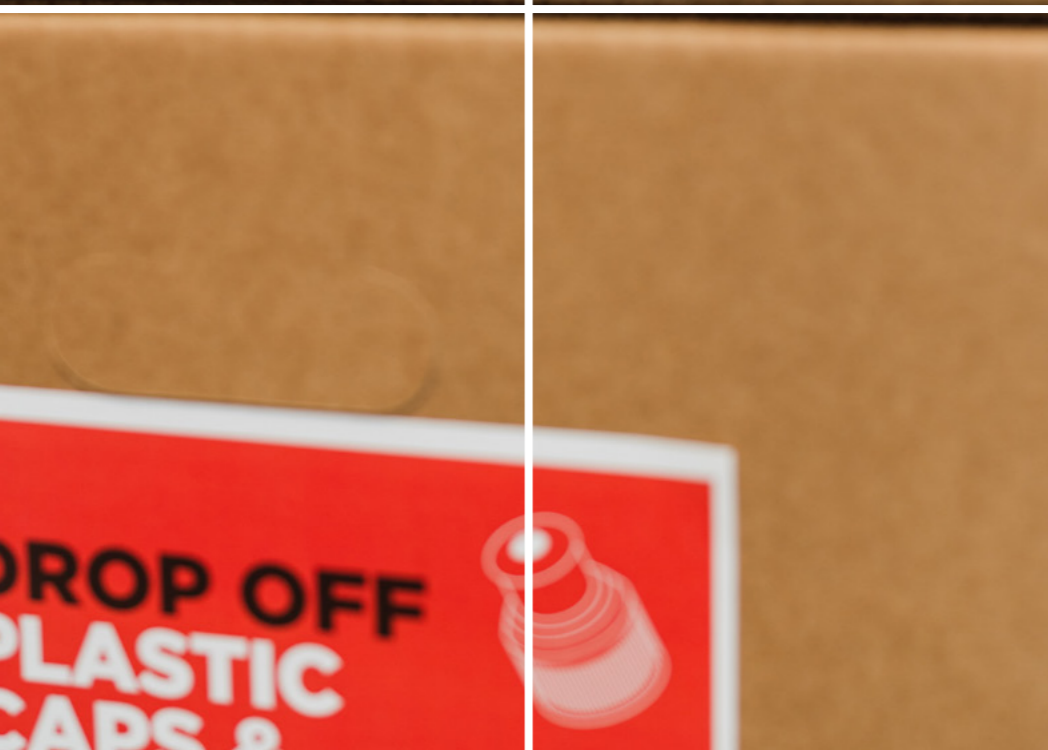
**PROUD PARTNER OF THE CAPS & LIDS RECYCLING SCHEME**

**YES!**

Find out more at [bit.ly/capslids](https://bit.ly/capslids)

calmanager@packagingforum.org.nz  
027 248 6175

THE PACKAGING FORUM  
CAPS & LIDS RECYCLING SCHEME



## SOFT PLASTIC RECYCLING SCHEME

### A decade of soft plastic recycling

The Packaging Forum's Soft Plastic Recycling Scheme has continued to expand its reach and increased the collection of post-consumer soft plastic by 36% to 1003 tonnes, equivalent to 154 million bags or wrappers, enough to be made into 102,000 Future Posts. The Scheme now has 318 collection sites across 46 council regions. 87% of New Zealanders have access to soft plastic recycling.

In 2025, the Scheme celebrates a decade of soft plastic recycling in New Zealand having launched the first soft plastic collection bin in Auckland in November 2015.

### CHALLENGES AND OPPORTUNITIES

#### End of accreditation as a voluntary product stewardship scheme

The Scheme's accreditation under the WMA 2008 as a voluntary product stewardship scheme expired on 31 March 2025. As plastic packaging including soft plastics is a priority product, the Scheme has applied to the Ministry for the Environment (MfE) for accreditation as a priority product. Without mandatory stewardship, the Scheme is not resourced to expand and improve collection systems, pay for the increased processing costs, and introduce the compliance and reporting structures which are necessary to grow the scheme.

The accreditation of the farm plastics scheme as a priority product which potentially includes within its scope soft plastic bags under 40kg containing products such as seed, feed, fertiliser, soil and crop inputs, farm and animal supplements sold to the consumer via retail and not just to farms, presents a further risk to the Scheme's viability if producers are asked to join multiple schemes.

#### Kerbside recycling trials

In October 2024, the Scheme commenced an initial six-month trial collecting soft plastic from 1000 households in Nelson. Households opted in to a separate collection service funded by the Scheme, working within the regulatory framework for kerbside collections. By end March 2025, 7641 "orange bags" were collected totalling 4.3 tonnes of soft plastic, and importantly store drop off collections increased by 45% reflecting increased awareness of soft plastic recycling in the community. A survey of participating households found that most people had not recycled their soft plastic prior to the trial, and 92% said it reduced the waste in their rubbish bins.

One of the challenges facing the Scheme is how to increase material recovery to meet increasing processing capacity and demand which will come through a mandatory plastic stewardship scheme. To understand the logistical

requirements and the economic feasibility, the Scheme is now looking at how to integrate soft plastic collections into the kerbside collection and sortation system.

#### Supporting New Zealand processing

The Scheme relies on its main processing partner, Future Post, to manage the majority of its soft plastic. Historically, Future Post has depended on the wine industry as its primary customer base. However, the wine industry is currently experiencing flat or declining sales, challenging economic conditions, and decreased global demand for wine. These factors have led to a reduced demand for Future Post's round posts, consequently lowering the demand for the Scheme's soft plastics. This presents an opportunity for Future Post to diversify into new markets, including posts, rails, bollards, and landscaping plastic timber for both domestic and commercial sectors. The Scheme and its members are actively supporting this transition. The Scheme continues to send a proportion of soft plastic to saveBOARD as well, to be processed into building supplies.

#### Supporting emerging technologies

The Soft Plastic Recycling Scheme is seen as a standout globally for supporting three onshore recycling solutions for post-consumer soft plastic. Mechanical recycling of



## GLASS PACKAGING FORUM SCHEME

soft plastic into posts or building materials may be considered downcycling from packaging, but the products created are replacing treated timber posts or providing sustainable building materials.

Globally, the pace of advanced/chemical recycling has slowed, with delays in Australia and Europe, and reduced processing capacities. For New Zealand, the best current solutions are mechanical recycling and smaller modular pyrolysis plants, complemented by optical sortation and prewash systems.

### Consumer engagement

The Scheme has a major focus on communicating with the consumer, primarily through its Soft Plastic Recycling Facebook page, which has over 12,000 followers and 20,000 views. The page reaches a predominantly female audience (87%), with 28% of users from Auckland.

**The Glass Packaging Forum (GPF) runs Aotearoa New Zealand's only accredited voluntary product stewardship scheme for glass bottles and jars.**

### Summary

The 2023-2024 reporting period was marked by a pleasing increase in both the glass recovery rate and recycling rate.

There was a substantial decline in glass to market which can be attributed to the prevailing economic downturn and cost of living crisis facing New Zealanders. There was also a move away from glass, by producers, to other packaging types as they seek efficiencies in areas like carbon and costs.

While the recovery rate saw a notable increase it must be noted it is in line with expectations due to the Auckland materials recovery facility being shut for 10 weeks in the 2022-2023 reporting period, effectively skewing the results for that period.

The increase in the recycling rate is heartening considering it is facing headwinds of soft market demand, largely due to the economic climate:

- Glass to market - 225,147, down 16%
- Recovery rate - 70%, up 4.9 percentage points
- Recycling rate - 66%, up 5.4 percentage points

### Focus on strategy

This period the Steering Committee focused on the GPF's strategy to ensure the ongoing relevance and effectiveness of the Scheme. A project was run to identify the GPF's ongoing function in New Zealand's larger glass recovery landscape.

This involved:

- Consulting with stakeholders
- Conducting consumer research
- Analysing results for insights and future scheme direction
- Exploring alternative operating models, and
- Developing a clear brand position.

The GPF interviewed prospective, past, and present members around the future of the Scheme. Four initial actions to guide the GPF's workplan were recommended:

- Increase network storage capacity by funding infrastructure improvements
- Focus on increasing glass recovery from the hospitality sector, improving rural collection networks, and improving kerbside collections
- Build resilience by facilitating investment in new infrastructure, and
- Be more effective at telling our story and engaging with the public.

### Funding

As part of a strategic review of the Scheme, the Steering Committee decided to temporarily suspend grant funding, and unspent funds were placed in reserves for future funding opportunities.

This allowed the Steering Committee to reassess the priorities, effectiveness, and reach of any funding awarded to ensure maximum impact.

This allowed for the strategy work to be completed, and funding priorities identified as part of a future work plan. Priorities for future applications will include:

- Potential to build network capacity and resilience
- Ability to increase the recovery of glass from under-served communities such as rural and holiday communities
- Ability to increase glass recovery from the hospitality industry, which is currently estimated to have a low recovery rate
- Projects which promote glass as a highly recyclable packaging material and improve the quality of recovered glass

### Engagement with central and local government

We created a briefing paper for incoming Minister for the Environment, Penny Simmonds, on the current state of container glass recovery and recycling and ways the

government can collaborate with the GPF.

We have also taken the approach to make submissions on all council Waste Management and Minimisation Plans (WMMPs) that are released for consultation. This is to support the councils' work to improve resource recovery outcomes, particularly for glass, with a focus on moving away from co-mingled collections.

## RECYCLING/ RESOURCE RECOVERY & LITTER ADVISORY GROUP

### BUSINESS FUNDING WASTE REDUCTION & RESOURCE RECOVERY SOLUTIONS

The Packaging Forum has allocated \$1.54 million since 2013 to projects that increase the availability of waste reduction and resource recovery solutions, education and research.

The Packaging Forum advocates for source separate material collections using colour coded standardised bins with clear signage and segregation to reduce contamination.

### Grants

In 2024/25 \$129,946 was allocated to projects that encourage reuse, increase resource recovery in public places and events, and fund education and awareness.

Funding applications show a shift from resource recovery to reduce and reuse projects.

The funded projects show investment across the country and include initiatives to reduce packaging through reuse systems, promote resource recovery and support community events.

### Education

The Packaging Forum renewed its relationship with Treadlightly with a commitment to fund \$16,000 with the first tranche paid in the 24/25 financial year. Treadlightly visited 27 primary schools throughout Auckland with their educational

## FOOD & BEVERAGE CARTON RECYCLING SCHEME

caravan and interactive classroom experience.

### Reduce packaging with reuse systems

Recircle received funding to support the purchase of smart bin technology so that consumers can return used household and personal care plastic containers to be washed at Will and Able's wash system and refilled for resale. Smart bins have been placed at a number of locations across Auckland with expansion throughout 2025 planned and data captured and analysed to support development of the reuse sector.

### Recycle: Championing Resource Recovery

Central Otago District Council received funding for two sets of three-way bins for glass, cans and waste to be installed at Alexandra Riverside Park to rejuvenate the Alexandra CBD.

Xtreme Zero Waste Raglan received funding to help install moveable bins to increase diversion at the busy Raglan site over the summer months.

New Sport Northland received funding for Wasteless bin stations for use at their events including the Whangārei half marathon.

### Supporting community events for over a decade – long term partnerships

AIMS Games celebrated its 21st anniversary with more athletes participating than at the Paris 2024 Olympic Games and with eight

schools representing the Cook Islands and Fiji. We first started supporting this event in 2013 and this year we supported not just the recycling programme but a reusable packaging initiative with the event's first boomerang mug library.

The Crankworx World Tour received funding for the fourth year as a major international event which puts Rotorua and the Bay of Plenty on the map. All soft plastic including race tape was recycled at Future Post. This year 1300 kgs of waste was diverted from landfill.

And we provided funding for the first time to Whangārei A&P show and Wāhi Tukuruā – Mercury Bay Resource Recovery Centre's – Whitianga Clean Up day.

### Litter research

Understanding litter composition is imperative to making good decisions about waste management.

Sustainable Coastlines: Funding to continue the Litter Intelligence programme which is New Zealand's only national beach, stormwater and wadeable stream litter and solutions database.

Be A Tidy Kiwi: Funding to conduct litter audits and counts in selected regions for comparison with surveys conducted in 2023 and 2019.

In the last year, The Packaging Forum's Food & Beverage Carton Recycling Scheme has expanded considerably and now sits at just under 100 drop off points across New Zealand – from Ngunguru in the north, to Stewart Island/Rakiura in the south. However, in what was an exciting development for the Scheme and its network, there is now a collection box at Scott Base in Antarctica; and the Scheme has also received its first shipment of food and beverage cartons from the frozen continent.

Brand membership increased over the year and there are now 12 brands funding the Scheme. Of key importance is that these brands represent approximately two thirds of the entire volume of food and beverage cartons placed on the market. Discussions are progressing with eight other brands that are in various stages of stepping up their sustainability commitments.

Collected volumes continue to increase in line with the increase in the number of drop off points which has resulted in more than 40 tonnes of cartons – the equivalent of 1.3 million cartons – being collected in the last 12 months. While a significant tonnage of material diverted from landfill to be recycled, this represents only about 1% of the market. However, for a Scheme that has only been operating for one year, this is a strong start and indicates there are considerable growth opportunities for the Scheme into the future.

A direct-to-consumer awareness campaign is in the plan for the coming year to increase those volumes. Direct to consumer communications without the usual associated budget is a challenge but one this Scheme is up for and has a potential solution to.

Logistics has been tightened up and a collaboration with Localised where they collect from all the Auckland community recycling centres is working well, as is the partnership with Habitat for Humanity in Christchurch and Earthlink in Wellington. Collaboration with the Caps & Lids TAG, while nascent, will move up a gear when the manager for both Schemes is amalgamated into the one role.

Destinations for collected material continues to be predominantly saveBOARD however to ensure options are kept open some material has been sold to a pulp mill offshore and some has been sent to a small recycler in Auckland who is developing a product/market and hopefully will be looking for more material soon.

Brands, who are members of the Scheme, have the right to use either the ARL or the Scheme's own on-pack recycling logo. This year a brand was caught out having the ARL on-pack, in the first instance they are invited to join the Scheme but, in this instance, they chose not to and, as such, are going through the APCO process to rectify the

situation. APCO reporting continues quarterly where brand membership, collected volumes and drop off point locations are shared.

The Holy Grail for those brands showing the leadership and contributing to the costs of recycling, versus those who don't, has come about via a reasonably sized food service distributor advising that they are moving their offerings to only those brands who are Scheme members. This shows the sustainability leadership of the members is paying off in the recognition of their commitment and is being rewarded by market access support.

## CAPS & LIDS RECYCLING SCHEME

Since the launch of the Caps & Lids Recycling Scheme in 2024, the pilot programme has experienced a period of fast growth, and things are looking positive for the programme to become a full EPR scheme in the future.

The Scheme was initially launched to members at The Packaging Forum's summit event on 4 September, with an official launch the following day at New World Birkenhead, which was the first store in New Zealand to have the collection boxes go out in store. This launch was followed by an event to promote the Scheme's expansion to Wellington in February 2025.

### Increased growth and expansion

In the financial year to 31 March 2025, there were 55 public collection points consisting of 33 Foodstuffs' stores and 22 community recycling hubs across wider Auckland, Tauranga, Wellington, and Christchurch. This has since increased to 62 sites, plus expansion to the Waikato region was planned to commence in May 2025.

The growth in collection points across New Zealand is representative of the opportunities for this Scheme – in September 2024 there were only 16 stores and four key recycling hubs as collection points. Expansion has been rapid, making easy access to recycling caps and lids a reality for more than 50% of New Zealanders. Community access is a key criterion for recycling labels so members of the Scheme

will be able to state 'conditionally recyclable' for their caps and lids.

Interest in the programme among consumers has been high, and support from the wider community has been extremely positive. There is certainly interest from other regions and locations to become collection points. Future expansion of the programme is tempered by the need to collect only what the network can sustainably manage, with available resource and funding, and only what can be processed and recycled.

### Collection volumes gaining traction

We are seeing excellent volumes coming through from new collection points, plus steady growth from existing sites as community members become familiar with the service. April was our first two tonne month, taking our total to over nine tonnes collected since launch. Nine tonnes is a small portion of material placed on market, though it is nine tonnes which may otherwise have been landfill or litter.

We're seeing a shift in consumer behaviour as awareness of the programme has been grown via our channels and those of our members, community and recycling hubs plus councils and industry partners.

### Membership is growing

Our membership has grown from 10 in September 2024 to 18 on 31 March 2025, with a key focus to grow this as it enables further resource

to expand the Scheme and improve efficiency for the entire network. The steady increase is significant and great to see — though there are many organisations not yet involved who should get on board to ensure their brands are on the leading edge of sustainable growth.

The Scheme would like to thank its partners and key support teams such as Zero Waste Network, Kilmarnock, Earthlink, Abilities, Redline, Cardinal Freight, and Sollys Transport.

### Marketing material available to members

At launch the Scheme produced a suite of marketing assets which are available to all Scheme members for use to promote their membership and the Caps & Lids Recycling Scheme. Members are encouraged to use these wherever possible through their networks.

### Proof of concept, data and insight

The Forum's pilot Scheme has been a steep learning curve, standing up a network from scratch, establishing supply chains and developing systems to manage logistics, data and collection flow from consumer to recyclers. The insights are invaluable as we look to improve design for circularity, plus continue to work on reducing cost and complexity to create sustainable outcomes for caps and lids that are better for NZ Inc — community, commerce and environment.

## PLASTIC PACKAGING PRODUCT STEWARDSHIP SCHEME

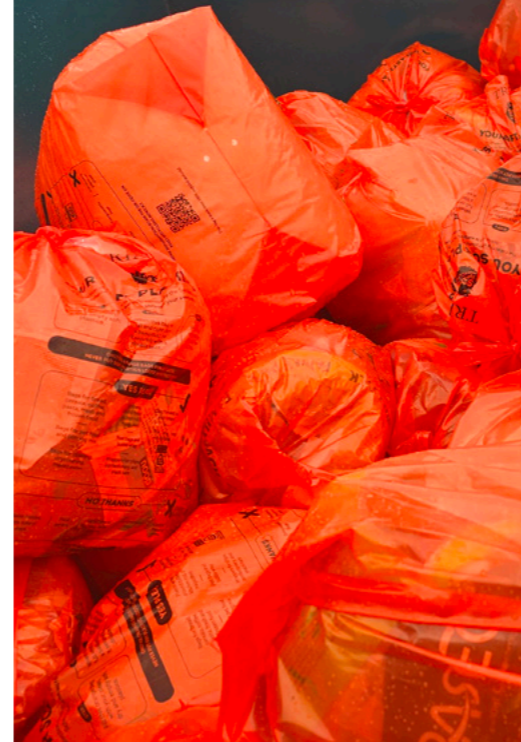
During the report period, the Packaging Forum has allocated resource to the PPPS scheme design project as a co-leader of the co-design process with the New Zealand Food and Grocery Council, the Ministry for the Environment and was widely consulted throughout our industry. The scheme report is now available at [www.ppps.org.nz](http://www.ppps.org.nz).

It's the culmination of more than two years' work, with big contributions from a wide range of stakeholders, including industry and government.

Today, we recycle just 19% of plastic packaging. If fully implemented, the PPPS would deliver a 50% plastic packaging recycling rate by 2036, potentially putting New Zealand among global best performers.

Modelling shows around 71,500 tonnes of plastic bottles (excluding beverage containers) and other rigid plastic containers; pots tubs and trays; and film and soft plastic materials would be diverted from landfill annually - an additional 45,666 tonnes over current levels. The preferred option is full separation at source, with producers taking on the cost of kerbside collecting and sorting of plastic packaging, which is currently paid for by councils through rates.

The report recommends key areas which would require regulatory change to enable the scheme to be implemented. At the time of writing, this report is with the Ministry for the Environment now to determine next steps.



## MEMBERS FINANCIAL YEAR 2024/2025

5R Solutions	Clorox New Zealand	Goodman Fielder	Lululemon	Pitango	Super Retail Group
AA Directions	Cloudy Bay Vineyards	Griffins	Lyttelton Port Company	Plastoil	Swisse Wellness
AB-InBev (NZ)	Coca-Cola Europacific Partners	Hanes Australasia	Makmar	Plus Pac Packaging Solutions	SWP Commercial
AB World Foods	Coffee Supreme	Happypet	MARS New Zealand	Polyprint Packaging	Tasti
Abe's Bagels	Colgate Palmolive	Harraways & Sons	Masterpet ANZ	Precinct Properties NZ	TCL Hunt
ACCO Brands NZ	Confoil	Hasper Brand Labs	McPhersons Consumer Products	Prinstock	Te Mata Estate
All Good	Constellation Brands NZ	Havana Coffee Works	Meadow Mushrooms	Procter & Gamble	Tegel Foods
Amcor Flexibles (New Zealand)	Cosmetics NZ	Hawk Group	Mercy Hospital Dunedin	Prodotti D'Italia	Tetra Pak
Ames Australasia	Cottonsoft	Healthy Kelsi	Mexican Supplies	Prolife Foods	The Antipodes Water Company
Anglesea Hospital	Dairyworks	Heartland Chips	Midlands Apiaries	Proper Snack Foods	The Baron
Apollo Foods	Daltons	Hello Fresh	Ministry of Education	Pure Delish	The Humble Oat
Arataki Honey	Danone Nutricia NZ	Hell Pizza	Mitchells Nutrition	Quantum Pacific	The Warehouse Group
ARL Ravensdown	Dark Horse Coffee	Hospitality NZ	Mondelez International	Radix Nutrition	Tilley Group
Arnott's	DB Breweries	Hunter's Wines (NZ)	Mrs Rogers	RB Hygiene New Zealand	T Leaf T
Arthur Holmes	Delegat's Wine Estate	Inghams	Multi-Color (Christchurch)	Real Meals	Tom & Luke
Arvida Retirement Village	Detpak NZ Sales	Innopack	Munro Footwear Group	Real Pet Food Company	TotalPak
Aroa Biosurgery	DM Dunningham	Integrated Packaging	My Food Bag	Real Rad Foods	Transcontinental Packaging
Asahi Beverages	Dole New Zealand	Integria Healthcare	Natural Pet Food Group	Re.Group	Tru-tech Fibreglass Industries
ASB	Eco Central	Jacobs Douwe Egberts NZ	Nelson Packaging Supplies	Resene	Tui Products
Ashley & Co	EIT Hawke's Bay Campus	James Crisp	Nestlé NZ	Restaurant Brands NZ	Turners & Growers
AsureQuality	Endeavour Consumer	Jenkins Freshpac Systems	New Zealand Beverage Council	Riceworkers New Zealand	UCC Coffee Group
Ata Rangi	Enphase Energy	JNTL Consumer Health (NZ)	Nibblish	Rubbish Direct	Unilever Australasia
Back Country Foods	Epicurean Dairy Co (Epic Dairy)	Just Lemons Marketing	Nulon	Sanfords	Universal Packaging
Beam Suntory (NZ)	Essity NZ	Kaipara Kumara	NZ Drum	Sanitarium	Uno Loco/Hula
Be A Tidy Kiwi	Farrah's	Karajoz Coffee Company	NZ Hothouse	Saputo Dairy Australia	Venerdi
Blue Frog Breakfast	Ferrero Australia Pty	Karma Drinks	NZ King Salmon	Saverglass NZ	Visy Industries
Bluebird Foods	Five Percent	Kathmandu	NZ Post	Scalzo Foods	Vitaco Health NZ
BNZ	Flexibond Pty	Kellogg's	NZ Sugar Company	Sea Treasure Seafoods	Wadding Solutions
Bon Accord Products	Flight Coffee	Kimberly-Clark New Zealand	Oceania Healthcare - Meadowbank	Sealed Air	Wainhouse Distributors
Bostock Brothers	Fonterra Brands	Kiwi Property Group	Offshoot (NZ)	Sealord	Walter Wild
Braemar Hospital	Foodstuffs NZ	Kmart	O F Pack	Secret Kiwi Kitchen	Waterbox
Breadcraft	Foundation Coffee	KPL Distribution	Omega Seafood	Serious Food Co.	Weave Cacao
Bremworth Carpets	Freightways	Kraft Heinz Watties	Only Organic	SIG BIZ	Wellington Chocolate Factory
Brewers Association NZ	Friendlypak NZ	Lamipak (Hong Kong)	Oob Foods	Silver Fern Farms	Wellington Regional Hospital
Broken Heart Spirits	Frucor Suntory NZ	Lamprint Packaging	Oriental Cuisine	Simplot New Zealand	Wesfarmers Group
Bundaberg Brewed Drinks NZ	Fruity Sacks	Lawson's Dry Hills	Orora Beverages	Sleepyhead - The Comfort Group	Westpac
Bunnings	Furtex	LIC Diagnostics	Pacrite Industries	Smales Farms	Whittakers & Sons
BUNZL New Zealand	General Mills	Life Health Foods	Palliser Estate Wines	Smart Environmental	Woodhaven Gardens
Calbee Australia	Genius Pet Food	Lion	Paramount Safety Products	Smart Foods	Woolworths NZ
Caspak Products	George Weston Foods	Liquorland	Pask Winery	Snell Packaging & Safety	WOOP
Ceres Enterprises	Giannis Pita Bread	Little Beauties	Perfetti Van Melle Export Far East	So Sweet	Yates
Chantal Organics	Giesen Group	Living Green NZ	Pernod Ricard NZ	Square One	Z Energy
Chateau Waimarama Company	Goldies Wholefoods	Loft Foods	Peru Café	Stratex Group	Zespri International
Chobani Pty	Good Nature	Lóreal	PharmaCare NZ - Radiance	Suntory Beverage & Food NZ	Ziploc



JSA Audit Limited  
is a CPA Practice



Level 2, 155 Parnell Road  
Parnell, Auckland 1052  
PO Box 136, Shortland St  
Auckland 1140  
NZBN: 9429042113638  
Phone + 64 9 302 7306  
Website [www.jsa.net.nz](http://www.jsa.net.nz)  
Email [enquiries@jsa.net.nz](mailto:enquiries@jsa.net.nz)

## INDEPENDENT AUDITOR'S REPORT

### To the Members of Packaging Forum Incorporated

#### Opinion

We have audited the performance report of Packaging Forum Incorporated (the Forum) on page 25 and pages 26 to 36, which comprises the entity information, the statement of service performance, the statement of financial performance and statement of cash flows for the year ended 31 March 2025, the statement of financial position as at 31 March 2025, and the statement of accounting policies and other explanatory information.

In our opinion, the performance report on page 25 and pages 26 to 36 presents fairly, in all material respects:

- the entity information for the year ended 31 March 2025;
- the financial position of the Forum as at 31 March 2025, and its financial performance and cash flows for the year then ended; and
- the service performance for the year ended 31 March 2025 in that the service performance information is appropriate and meaningful and prepared in accordance with the Forum's measurement bases or evaluation methods

in accordance with the requirements of the Tier 3 (NFP) standard, issued in New Zealand by the New Zealand Accounting Standards Board.

#### Basis for Opinion

We conducted our audit of the statement of financial performance, statement of financial position, statement of cash flows, statement of accounting policies and notes to the Performance Report in accordance with International Standards on Auditing (New Zealand) (ISAs (NZ)), and the audit of the entity information and statement of service performance in accordance with New Zealand Auditing Standard 1 (Revised) 'The Audit of Service Performance Information' (NZ AS1 (Revised)). Our responsibilities under those standards are further described in the Auditor's Responsibilities for the Audit of the Performance Report section of our report. We are independent of Packaging Forum Incorporated in accordance with Professional and Ethical Standard 1 'International Code of Ethics for Assurance Practitioners (*including International Independence Standards*) (New Zealand) issued by the New Zealand Auditing and Assurance Standards Board, and we have fulfilled our other ethical responsibilities in accordance with these requirements. We believe that the audit evidence we have obtained is sufficient and appropriate to provide a basis for our opinion.

Other than in our capacity as auditor we have no relationship with, or interests in, Packaging Forum Incorporated.

#### Other Matter

The performance report for the year ended 31 March 2025 is the first year for the Forum to adopt Tier 3 (NFP) Standard. The financial statements for 31 March 2024 financial year were special purpose reports, for the sole purpose of complying with the financial reporting requirements of the Incorporated Societies Act 1908.

The special purpose financial statements for the year ended 31 March 2024 was reviewed by JSA Audit Limited in accordance with International Standard on Review Engagements (New Zealand) (ISRE (NZ)) 2400, Review of Historical Financial Statements Performed by an Assurance Practitioner who is not the Auditor of the Entity. A review of special purpose financial statements in accordance with ISRE (NZ) 2400 is a limited assurance engagement.

The statement of service performance for the year ended 31 March 2024 was not audited by JSA Audit Limited.

#### Information Other Than the Performance Report and Auditor's Report

The Board is responsible for the other information. The other information comprises the approval of financial report on page 25, but does not include the performance report and our auditor's report thereon.

Our opinion on the performance report does not cover the other information and we do not express any form of audit opinion or assurance conclusion thereon. In connection with our audit of the performance report, our responsibility is to read the other information and, in doing so, consider whether the other information is materially inconsistent with the performance report or our knowledge obtained in the audit or otherwise appears to be materially misstated.

If, based on the work we have performed, we conclude that there is a material misstatement of this other information, we are required to report that fact. We have nothing to report in this regard.

#### Responsibilities of the Board for the Performance Report

The Board is responsible on behalf of the Forum for:

- The preparation and fair presentation of the performance report in accordance with Tier 3 (NFP) Standard issued in New Zealand by the New Zealand Accounting Standards Board;
- The selection of elements/aspects of service performance, performance measures and/or descriptions and measurement bases or evaluation methods that present service performance information that is appropriate and meaningful in accordance with the applicable financial reporting framework;
- The preparation and fair presentation of service performance information in accordance with the Forum's measurement bases or evaluation methods, in accordance with the applicable financial reporting framework;
- The overall presentation, structure and content of the service performance information in accordance with the applicable financial reporting framework; and
- For such internal control as the Board determines is necessary to enable the preparation of a performance report that is free from material misstatement, whether due to fraud or error.

In preparing the performance report, the Board is responsible on behalf of the Forum for assessing the Forum's ability to continue as a going concern, disclosing, as applicable, matters related to going concern and using the going concern basis of accounting unless the Board either intends to liquidate the Forum or to cease operations, or have no realistic alternative but to do so.

#### Auditor's Responsibilities for the Audit of the Performance Report

Our objectives are to obtain reasonable assurance about whether the performance report as a whole is free from material misstatement, whether due to fraud or error, and to issue an auditor's report that includes our opinion. Reasonable assurance is a high level of assurance, but is not a guarantee that an audit conducted in accordance with ISAs (NZ) and NZ AS 1 (Revised) will always detect a material misstatement when it exists. Misstatements can arise from fraud or error and are considered material if, individually or in the aggregate or collectively, they could reasonably be expected to influence the decisions of users taken on the basis of this performance report.

As part of an audit in accordance with ISAs (NZ) and NZ AS 1 (Revised), we exercise professional judgement and maintain professional scepticism throughout the audit. We also:

- Identify and assess the risks of material misstatement of the performance report, whether due to fraud or error, design and perform audit procedures responsive to those risks, and obtain audit evidence that is sufficient and appropriate to provide a basis for our opinion. The risk of not detecting a material misstatement resulting from fraud is higher than for one resulting from error,

as fraud may involve collusion, forgery, intentional omissions, misrepresentations, or the override of internal control.

- Obtain an understanding of internal control relevant to the audit in order to design audit procedures that are appropriate in the circumstances, but not for the purpose of expressing an opinion on the effectiveness of the Forum's internal control.
- Evaluate the appropriateness of accounting policies used and the reasonableness of accounting estimates and related disclosures made by management and the Board.
- Obtain an understanding of the process applied by the Forum to select its elements/aspects of service performance, performance measures and/or descriptions and the measurement bases or evaluation methods.
- Evaluate whether the selection of elements/aspects of service performance, performance measures and/or descriptions and measurement bases or evaluation methods present an appropriate and meaningful assessment of the Forum's service performance in accordance with the applicable financial reporting framework.
- Evaluate whether the service performance information is prepared in accordance with the Forum's measurement bases or evaluation methods, in accordance with the applicable financial reporting framework
- Conclude on the appropriateness of the use of the going concern basis of accounting by those charged with governance and, based on the audit evidence obtained, whether a material uncertainty exists related to events or conditions that may cast significant doubt on the Forum's ability to continue as a going concern. If we conclude that a material uncertainty exists, we are required to draw attention in our auditor's report to the related disclosures in the financial statements or, if such disclosures are inadequate, to modify our opinion. Our conclusions are based on the audit evidence obtained up to the date of our auditor's report. However, future events or conditions may cause the Forum to cease to continue as a going concern.
- Evaluate the overall presentation, structure and content of the performance report, including the disclosures, and whether the performance report represent the underlying transactions and events in a manner that achieves fair presentation.

We communicate with those charged with governance regarding, among other matters, the planned scope and timing of the audit and significant audit findings, including any significant deficiencies in internal control that we identify during our audit.

#### Restriction on Responsibility

This report is made solely to the Members of Packaging Forum Incorporated, as a body. Our audit work has been undertaken so that we might state to the Members of the Forum those matters we are required to state to them in an auditor's report and for no other purpose. To the fullest extent permitted by law, we do not accept or assume responsibility to anyone other than the Members of the Forum as a body, for our audit work, for this report, or for the opinions we have formed.

*JSA AUDIT LTD*

**JSA Audit Limited**  
Parnell, Auckland  
16 June 2025

## PACKAGING FORUM INCORPORATED

### ENTITY INFORMATION

#### FOR THE YEAR ENDED 31 MARCH 2025

#### WHO ARE WE? & WHY DO WE EXIST?

##### Legal Name of Entity

Packaging Forum Incorporated

##### Entity Type and Legal Basis

Incorporated Society

##### Registration Number

1842705

##### Entity's Purpose or Mission

The Packaging Forum's main mission is to become the trusted voice for packaging in New Zealand.

##### Entity Structure

The Packaging Forum operates as a single entity with several divisions

##### Main Sources of Entity's Cash and Resources

Levies

##### Main Methods Used by Entity to Raise Funds

The Packaging Forum's main method to raise funds is via membership levy invoicing.

##### Entity's Reliance on Volunteers and Donated Goods or Services

The Packaging Forum relies on Volunteers for its Governance. The Forum does not rely on donated goods or services.

##### Entity's Governance Arrangements

The Packaging Forum have an elected Board of Member volunteers.

##### Other Entities Controlled by the Entity

There are no other entities controlled by The Packaging Forum.

## PACKAGING FORUM INCORPORATED

### APPROVAL OF FINANCIAL REPORT

#### FOR THE YEAR ENDED 31 MARCH 2025

The Board are pleased to present the approved financial report including the historical financial statements of Packaging Forum Incorporated for year ended 31 March 2025.

APPROVED



**Nick Baker**  
Packaging Forum Chair

13 June 2025



**Gavin Fong**  
Packaging Forum Board Member - Finance

13 June 2025

PACKAGING FORUM INCORPORATED  
**STATEMENT OF PERFORMANCE**  
 FOR THE YEAR ENDED 31 MARCH 2025  
 WHAT DID WE DO? & WHEN DID WE DO IT?

**Description of Medium to Long Term Objectives**

The primary objective for the reporting period was to increase the availability and accessibility of waste reduction, resource recovery and recycling solutions across New Zealand. This aligns with our commitment to supporting a circular economy via operating sustainable end-of-life solutions to packaging through our four voluntary product stewardship scheme/tag groups covering the following material and packaging (glass, soft plastic, food and beverage cartons and caps and lids).

**Description of Key Activities**

	2025	2024
Soft Plastic Collection Sites	4.10%	20.79%
Food & Beverage Collection Sites	40.30%	-
Caps and Lids Collection Sites (new measure)	-	-

The Packaging Forum Incorporated (the Forum) is an incorporated society. The Forum was established to encompass not only the activities of the Glass Packaging Forum (GPF) but also encompass those of other enterprises, whose activities involve the commercial use of packaging material other than glass, with accredited schemes whereby the environmental issues associated with them can be addressed in a concerted and constructive way thereby facilitating the best outcomes for both the private and public sectors involved.

Since its inception, the Forum has focused on continued work with the community to improve recycling initially for glass through the Glass Packaging Forum, flexible plastics through its Soft Plastic Recycling Scheme (SP) and litter and public place recycling across all of its schemes and initiatives. The Forum was one of the first organisations to have its voluntary product stewardship schemes accredited by the Minister of the Environment (MfE) under the Waste Minimisation Act 2008 initially with glass in 2010, with public place recycling in 2013 (expired in 2020) and soft plastics in 2018, which now operates as a component of the Forum, as will any other future product stewardship schemes.

**Performance Delivered**

During the reporting year, the entity focused on expanding public access to waste reduction, resource recovery and recycling solutions through the following key outputs:

**Expansion of Collection Sites**

The number of collections sites increased from 433 in 2024 to 530 in 2025, representing 22.40% growth. These sites were strategically placed to improve regional coverage and convenience for users.

**Infrastructure and Signage Development**

Supporting infrastructure, including finding drop off locations via the websites, social media and sign age installed across all new sites and assets to enhance visibility and usability (i.e. collection bins and boxes)

PACKAGING FORUM INCORPORATED  
**STATEMENT OF FINANCIAL PERFORMANCE**  
 FOR THE YEAR ENDED 31 MARCH 2025  
 HOW WAS IT FUNDED? & WHAT DID IT COST?

	NOTE	2025	2024
<b>Revenue</b>			
Government contributions	1	323,598	457,461
Levies and industry contribution	1	3,232,481	3,029,832
Interest, dividends and other investment revenue	1	138,856	98,441
Revenue from commercial activities	1	33,482	43,425
<b>Total Revenue</b>		<b>3,728,417</b>	<b>3,629,159</b>
<b>Expenses</b>			
Scheme and project cost	2	1,741,619	1,529,279
Contractors and employee related cost	2	791,987	646,479
Communication, research and marketing	2	458,173	356,181
Funding and related cost	2	554,837	206,198
Administration	2	163,362	124,481
<b>Total Expenses</b>		<b>3,709,977</b>	<b>2,862,619</b>
<b>Surplus/(Deficit) before taxation</b>		<b>18,440</b>	<b>766,540</b>
<b>Taxation</b>			
Income tax expense	3	28,655	21,847
<b>Net Surplus/(Deficit) after taxation</b>		<b>(10,215)</b>	<b>744,693</b>

PACKAGING FORUM INCORPORATED  
**STATEMENT OF FINANCIAL POSITION**  
 AS AT 31 MARCH 2025

WHAT THE ENTITY OWNS & WHAT THE ENTITY OWES

	NOTE	2025	2024
<b>Assets</b>			
<b>Current Assets</b>			
Bank accounts and cash	4	1,810,412	1,736,015
Debtors and prepayments	4	238,216	528,903
Term Deposits		1,169,121	1,162,189
Other Current Assets	4	77,000	2,922
Income tax refund		8,459	7,686
Net GST Receivables		104,298	67,168
<b>Total Current Assets</b>		<b>3,407,506</b>	<b>3,504,883</b>
<b>Total Assets</b>		<b>3,407,506</b>	<b>3,504,883</b>
<b>Liabilities</b>			
<b>Current Liabilities</b>			
Creditors and accrued expenses	5	394,615	485,801
Other current liabilities	5	6,948	2,923
<b>Total Current Liabilities</b>		<b>401,562</b>	<b>488,724</b>
<b>Total Liabilities</b>		<b>401,562</b>	<b>488,724</b>
<b>Net Assets</b>		<b>3,005,944</b>	<b>3,016,159</b>
<b>Accumulated Funds</b>			
Accumulated Funds	6	3,005,944	3,016,159
<b>Total Accumulated Funds</b>		<b>3,005,944</b>	<b>3,016,159</b>

PACKAGING FORUM INCORPORATED  
**STATEMENT OF CASH FLOWS**  
 FOR THE YEAR ENDED 31 MARCH 2025

HOW THE ENTITY AS RECEIVED AND USED CASH

	2025	2024
<b>Cash Flows from Operating Activities</b>		
<b>Operating Receipts</b>		
Government contributions	323,598	457,461
Levies and industry contributions	3,210,230	2,987,532
Revenue from commercial activities	33,482	43,425
Interest, dividends and other investment receipts	123,710	98,441
<b>Total Operating Receipts</b>	<b>3,691,020</b>	<b>3,586,858</b>
<b>Operating Payments</b>		
Scheme and project cost	(1,611,905)	(1,655,195)
Contractors and employee related cost	(791,987)	(646,479)
Communication, research and marketing	(458,173)	(356,181)
Funding and related cost	(554,837)	(206,198)
Administration	(163,362)	(124,481)
Income tax paid	(29,428)	(27,073)
Payments to purchase term deposits	(6,932)	(459,414)
<b>Total Operating Payments</b>	<b>(3,616,623)</b>	<b>(3,475,022)</b>
<b>Total Cash Flows from Operating Activities</b>	<b>74,397</b>	<b>111,837</b>
<b>Net Increase/(Decrease) in Cash</b>	<b>74,397</b>	<b>111,837</b>
<b>Cash Balances</b>		
Cash and cash equivalents at beginning of period	1,736,015	1,624,178
Cash and cash equivalents at end of period	1,810,412	1,736,015
Net change in cash for period	74,397	111,837

PACKAGING FORUM INCORPORATED  
**STATEMENT OF ACCOUNTING POLICIES**  
 FOR THE YEAR ENDED 31 MARCH 2025  
 HOW DID WE DO OUR ACCOUNTING?

#### Basis of Preparation

The entity is permitted by law to apply the Tier 3 (NFP) Standard issued by the External Reporting Board (XRB) and has elected to do so. A PBE may apply the standard if it does not have public accountability and has total annual expenses less than or equal to \$5,000,000. All transactions in the Performance Report are reported using the accrual basis of accounting. The Performance Report is prepared under the assumption that the entity will continue to operate in the foreseeable future.

#### Goods and Services Tax (GST)

The entity is registered for GST. All amounts are stated exclusive of goods and services tax (GST) except for accounts payable and accounts receivable which are stated inclusive of GST.

#### Income Tax

Income tax is accounted for using taxes payable method i.e the income tax expense charge to the statement of financial performance is based on the return to the Inland Revenue.

#### Bank Accounts and Cash

Bank accounts and cash in the Statement of Cash Flows comprise cash balances and bank balances (including short term deposits) with original maturities of 90 days or less.

#### Revenue Recognition

Levies are recognised when invoiced to members.

Interest received is credited to the statement of financial performance on an accrual basis.

#### Project Funding

Amounts applied towards funding various projects are expensed in the year incurred. If items of property, plant and equipment are acquired for a specific project then their cost is expensed even though the Forum may retain ownership rights in that property.

#### Inter-divisional transactions

Inter-divisional transactions and balance are eliminated on consolidation of the six divisions.

#### Changes in Accounting Policies

There have been no changes in accounting policies. Policies have been applied on a consistent basis with those of the previous reporting period.

This is the first performance report prepared applying Tier 3 (NFP) Standard. Previously the entity has reported under the specific accounting policies outlined below for the sole purpose of complying with the financial reporting requirements of the Incorporated Societies Act 1908.

PACKAGING FORUM INCORPORATED  
 NOTES TO THE PERFORMANCE REPORT  
 FOR THE YEAR ENDED 31 MARCH 2025

	2025	2024
<b>1. Analysis of Revenue</b>		
<b>Government contributions</b>		
Plastics Packaging Product Stewardship - Ministry Contribution	323,598	457,461
<b>Total Government contributions</b>	<b>323,598</b>	<b>457,461</b>
<b>Levies and industry contributions</b>		
Caps & Lids - Levies	142,750	30,000
Food & Beverage Carton Scheme - Levies	80,349	20,977
Glass Packaging Forum Inc - Levies	452,064	495,655
Packaging Forum Incorporated - Levies	1,033,861	1,046,944
Soft Plastics Project - Levies	1,502,858	1,386,256
Plastics Packaging Product Stewardship - Industry contribution to PPPS	20,600	50,000
<b>Total Levies and industry contributions</b>	<b>3,232,481</b>	<b>3,029,832</b>
<b>Interest, dividends and other investment revenue</b>		
Caps & Lids - Interest Income	1,134	185
Food & Beverage Carton Scheme - Interest Income	630	506
Glass Packaging Forum Inc - Interest Income	22,176	16,500
Packaging Forum Incorporated - Interest Income	50,348	35,186
Plastics Packaging Product Stewardship - Interest Income	2,363	3,668
Soft Plastics Project - Interest Income	62,205	42,396
<b>Total Interest, dividends and other investment revenue</b>	<b>138,856</b>	<b>98,441</b>
<b>Revenue from commercial activities</b>		
Non Member Income	0	766
Caps & Lids - Recycling	86	0
Soft Plastic Project - Recycling	33,396	42,659
<b>Total Revenue from commercial activities</b>	<b>33,482</b>	<b>43,425</b>

	2025	2024
<b>2. Analysis of Expenses</b>		
<b>Scheme and project costs</b>		
Plastic Packaging Product Stewardship (PPPS)	490,689	519,907
Collections and logistics (FBC)	46,041	3,278
Infrastructure and Signage (FBC/CAPS)	54,394	0
Collection costs/bailing (SP)	557,391	397,352
Recycling bins and liners (SP)	39,751	46,819
Processing fees (SP)	402,761	463,034
Logistics (SP)	93,310	69,536
Third party verification	12,610	13,160
TAG Caps & Lids	44,672	12,118
TAG Fibre based packaging	0	900
TAG Good and beverage cartons (FBC)	0	3,175
<b>Total Scheme and project costs</b>	<b>1,741,619</b>	<b>1,529,279</b>
<b>Contractors and employee related cost</b>		
PF Health Check Audit	11,520	0
CEO, scheme manager, administration and contractors	777,658	616,479
Recruitment	14,734	0
Strategy development	(11,925)	30,000
<b>Total Contractors and employee related cost</b>	<b>791,987</b>	<b>646,479</b>
<b>Communication, research and marketing</b>		
Conference and workshops	55,674	35,334
Data capture, monitoring and audit	23,790	24,212
Member engagement and external communication	240,630	182,489
Research and surveys	131,306	94,475
MfE reports engagement	2,580	16,557
Website design and development	4,192	3,115
<b>Total Communication, research and marketing</b>	<b>458,173</b>	<b>356,181</b>
<b>Funding and related cost</b>		
Resources - GPF	117,891	34,740
Resources - Litter	53,327	44,750
Research - Litter	15,000	15,300
Promotion and Education - Litter	31,619	34,899
Resources - SP	250,000	0
Research - SP	17,100	47,509
Promotion and Education SP	69,901	29,000
<b>Total Funding and related cost</b>	<b>554,837</b>	<b>206,198</b>

	2025	2024
<b>Administration</b>		
AGM and annual report	12,416	12,595
Review, audit fees and accounting	15,017	9,899
Bank fees	270	182
Computer and IT cost	1,627	420
Development and training	11,025	0
General	8,488	11,654
Insurance - all schemes	4,005	3,582
Legal	20,115	14,118
Stationery, postage and printing	4,139	4,373
Subscriptions/MYOB	31,957	26,340
Telecommunications	5,283	3,833
Website hosting/Facebook and support costs	8,754	9,149
Travel and accommodation	40,265	28,337
<b>Total Administration</b>	<b>163,362</b>	<b>124,481</b>

### 3. Income Tax Expense

Interest Received	138,856	98,441
Expenses claimed	(35,515)	(19,415)
Exemption allowed	(1,000)	(1,000)
Taxable Income	<b>102,341</b>	<b>78,026</b>
Income tax expense as per statement of financial performance	<b>28,655</b>	<b>21,847</b>

	2025	2024
<b>4. Analysis of Assets</b>		
<b>Bank accounts and cash</b>		
Caps & Lids - BNZ Cheque Account	101,074	26,162
Food & Beverage Carton Scheme - BNZ Cheque Account	31,766	35,400
Glass Packaging Forum Inc - BNZ Cheque Account	61,975	65,833
Glass Packaging Forum Inc - BNZ Savings Account	438,395	287,111
Packaging Forum Incorporated - BNZ Cheque Account	2,430	15,040
Packaging Forum Incorporated - BNZ Savings Account	676,952	646,687
Plastics Packaging Product Stewardship - BNZ Cheque Account	47,592	159,316
Soft Plastics Project - BNZ Cheque Account	58,699	14,077
Soft Plastics Project - BNZ Savings Account	391,529	486,388
<b>Total Bank accounts and cash</b>	<b>1,810,412</b>	<b>1,736,015</b>
<b>Debtors and prepayments</b>		
Caps & Lids - Accounts Receivable	4,098	5,750
Food & Beverage Carton Scheme - Accounts Receivable	8,109	9,247
Glass Packaging Forum Inc - Accounts Receivable	63,943	107,458
Packaging Forum Incorporated - Accounts Receivable	1,150	6,245
Packaging Forum Incorporated - Prepayments	5,680	5,236
Plastics Packaging Product Stewardship - Accounts Receivable	78,827	66,143
Soft Plastics Project - Accounts Receivable	67,392	65,357
Soft Plastics Project - Prepayments	9,016	263,467
<b>Total Debtors and prepayments</b>	<b>238,216</b>	<b>528,903</b>
<b>Other current assets</b>		
Caps & Lids - Accrued Interest	112	0
Caps & Lids - Other Current Assets	92	92
Food & Beverage Carton Scheme - Accrued Interest	33	0
Food & Beverage Carton Scheme - Other Current Assets	23	23
Glass Packaging Forum Inc - Packaging Forum	767	767
Glass Packaging Forum - Accrued Interest	1,742	0
Packaging Forum Incorporated - Accrued Interest	5,375	0
Scales	1,714	0
Plastic Packaging Product Stewardship - Accrued Interest	54	0
Soft Plastics Project - Accrued Interest	7,831	0
Plastics Packaging Product Stewardship - Other Current Assets	856	856
Soft Plastics Project - Other Current Assets	1,184	1,184
Scales	2,474	0
Soft Plastics Project - Loan to Future	54,744	0
<b>Total Other current assets</b>	<b>77,000</b>	<b>2,922</b>

	2025	2024
<b>5. Analysis of Liabilities</b>		
<b>Creditors and accrued expenses</b>		
Caps & Lids - Creditors	10,450	0
Food & Beverage Carton Scheme - Creditors	4,651	2,316
Glass Packaging Forum Inc - Creditors	19,569	20,305
Packaging Forum Incorporated - Creditors	84,093	103,864
Plastics Packaging Product Stewardship - Creditors	18,303	39,323
Soft Plastics Project - Creditors	136,518	108,214
Caps & Lids - Accruals	8,300	0
Glass Packaging Forum Inc - Accruals	61,755	49,380
Packaging Forum Incorporated - Accruals	39,979	66,000
Soft Plastics Project - Accruals	10,997	96,400
<b>Total Creditors and accrued expenses</b>	<b>394,615</b>	<b>485,801</b>
<b>Other current liabilities</b>		
Packaging Forum Incorporated - Sundry Accruals	3,923	2,923
Soft Plastics Project - Fees paid in advance	3,025	0
<b>Total Other current liabilities</b>	<b>6,948</b>	<b>2,923</b>
<b>6. Accumulated Funds</b>		
Accumulated surpluses brought forward	3,016,159	2,271,465
Current year surplus(deficit)	(10,215)	744,693
<b>Total Accumulated Funds</b>	<b>3,005,944</b>	<b>3,016,159</b>

## 7. Commitments

### Commitments to lease or rent assets

Auckland Baler lease expired 31/3/2025, renewed for another 12 Month period.	16,723	6,348
New Waikato Baler starting June 2025 for a 36 month period.		

**Total Commitments to lease or rent assets** **16,723** **6,348**

### Commitments to provide loans or grants

Loan to Future Post for mouldings as agreed	105,164	0
---	---------	---

**Total Commitments to provide loans or grants** **105,164** **0**

The Packaging Forum agreed to pay on behalf of Future Post the amount of \$91,446.65 plus GST to SWPE for the purchase of square moulds and rails moulds. The commitment has been agreed upon via an agreement dated 4 February 2025

PACKAGING FORUM INCORPORATED  
**STATEMENT OF FINANCIAL PERFORMANCE BY DIVISION**  
 FOR THE YEAR ENDED 31 MARCH 2025

### 8. Contingent Liabilities and Guarantees

There are no contingent liabilities or guarantees as at 31 March 2025 (Last year - nil).

### 9. Related Parties

All levy income of the Forum is derived from its members. Other than that there were no material related party transactions during the year (2024:Nil). No related party balances have been written off in the period under review (2024:Nil)

### 10. Events After the Balance Date

There were no events that have occurred after the balance date that would have a material impact on the Performance Report (2024 : nil)

### 11. Ability to Continue Operating

The entity will continue to operate for the foreseeable future.

### 12. Comparatives

Where necessary, certain comparative information has been reclassified in order to conform to changes in presentation in the current year.

	Caps & Lids	Food & Beverage Carton Scheme	Glass Packaging Forum Inc	Packaging Forum Inc	Plastic Packaging Product S'ship	Soft Plastic Project	Combined 2025
Industry contribution to PPPS	-	-	-	-	20,600	-	20,600
Ministry contribution to PPPS	-	-	-	-	323,598	-	323,598
Recycling bins/liners/freight (SP)	-	-	-	-	-	33,396	33,396
Non member income	86	-	-	-	-	-	86
Interest income	1,134	630	22,176	50,348	2,363	62,205	138,856
Levies	142,750	80,349	452,064	1,033,861	-	1,502,858	3,211,881
<b>Total revenue</b>	<b>143,970</b>	<b>80,979</b>	<b>474,240</b>	<b>1,084,208</b>	<b>346,561</b>	<b>1,598,460</b>	<b>3,728,417</b>

### Expenses

#### Operating costs

Plastic Packaging Product S'ship	-	-	-	-	490,689	-	490,689
Conferences and workshops	-	-	6,120	49,554	-	-	55,674
Data capture/monitoring/audit	-	-	10,585	13,205	-	-	23,790
External funding projects	-	-	117,891	99,946	-	337,001	554,837
Member engagement/external comms	3,576	4,025	73,407	134,918	-	24,704	240,630
Research and surveys	-	-	-	87,914	-	43,392	131,306
MfE reports engagement	-	-	2,580	-	-	-	2,580
TAG Caps & lids	19,555	-	-	25,116	-	-	44,672
Collections/logistics (FBC)	-	46,041	-	-	-	-	46,041
Infrastructure/Signage	24,601	29,793	-	-	-	-	54,394
Collection costs/baling (SP)	-	-	-	-	-	557,391	557,391
Processing fees (SP)	-	-	-	-	-	402,761	402,761
Recycling bins/liners (SP)	-	-	-	-	-	39,751	39,751
Logistics (SP)	-	-	-	-	-	93,310	93,310
Third party verification	-	-	12,610	-	-	-	12,610
Travel and accommodation	1,700	109	5,331	20,677	-	12,449	40,265
Strategy development	-	-	-	(11,925)	-	-	(11,925)
	<b>49,433</b>	<b>79,968</b>	<b>228,523</b>	<b>419,405</b>	<b>490,689</b>	<b>1,510,759</b>	<b>2,778,777</b>

PACKAGING FORUM INCORPORATED  
**STATEMENT OF FINANCIAL POSITION BY DIVISION**  
AS AT 31 MARCH 2025

	Caps & Lids	Food & Beverage Carton Scheme	Glass Packaging Forum Inc	Packaging Forum Inc	Plastic Packaging Product S'ship	Soft Plastic Project	Combined 2025
<b>Overhead costs</b>							
AGM and annual report	-	-	-	12,416	-	-	12,416
Review/audit fees/accounting	-	-	-	15,017	-	-	15,017
Bank fees	9	20	14	149	-	77	270
CEO/scheme managers/administra- tion/contractors	33,464	6,891	121,993	381,719	-	233,592	777,658
Computer and IT Costs	-	-	-	1,627	-	-	1,627
Development and training	-	-	-	11,025	-	-	11,025
General	-	-	891	6,350	-	1,247	8,488
PF Health Check Audit	-	-	-	11,520	-	-	11,520
Insurance - all schemes	-	-	-	4,005	-	-	4,005
Legal	-	-	-	20,115	-	-	20,115
Recruitment	-	-	-	14,734	-	-	14,734
Stationery, postage and printing	-	-	-	1,027	-	3,111	4,139
Subscriptions/MYOB	182	312	3,459	28,004	-	-	31,957
Telecommunications	160	-	808	3,458	-	856	5,283
Website hosting/Facebook and sup- port costs	-	660	1,397	5,612	-	1,085	8,754
Website design and development	2,700	-	267	1,225	-	-	4,192
	<b>36,515</b>	<b>7,882</b>	<b>128,830</b>	<b>518,004</b>	<b>-</b>	<b>239,969</b>	<b>931,200</b>
Total expenses	85,948	87,850	357,353	937,409	490,689	1,750,728	3,709,977
<b>Net (loss)/surplus before taxation</b>	<b>58,022</b>	<b>(6,871)</b>	<b>116,886</b>	<b>146,800</b>	<b>(144,128)</b>	<b>(152,268)</b>	<b>18,440</b>
Income Tax Expense	241	160	4,477	8,546	657	14,574	28,655
<b>Net (loss)/surplus after taxation</b>	<b>57,781</b>	<b>(7,031)</b>	<b>112,409</b>	<b>138,254</b>	<b>(144,785)</b>	<b>(166,842)</b>	<b>(10,215)</b>

	Caps & Lids	Food & Beverage Carton Scheme	Glass Packaging Forum Inc	Packaging Forum Inc	Plastic Packaging Product S'ship	Soft Plastic Project	Combined 2025
<b>Current Assets</b>							
BNZ - cheque account	101,074.00	31,766.00	61,975.00	2,430.00	47,592.00	58,699.00	303,536
BNZ - savings	-	-	438,395.00	676,952.00	-	391,529.00	1,506,876
Term Deposits	-	-	244,121.00	375,000.00	-	550,000.00	1,169,121
Accounts receivable	4,098.00	8,109.00	63,943.00	1,150.00	78,827.00	67,392.00	223,519
Prepayments	-	-	-	5,680.00	-	9,016.00	14,696
Net GST Receivable (Payable)	1,222.00	-1,173.00	-5,973.00	42,567.00	-4,191.00	71,847.00	104,299
Income tax refund	66.00	19.00	1,653.00	4,946.00	36.00	1,738.00	8,458
Loan to Future Post	-	-	-	-	-	54,744.00	54,744
Other current assets	203.00	56.00	2,509.00	7,090.00	909.00	11,490.00	22,257
<b>Total current assets</b>	<b>106,663</b>	<b>38,777</b>	<b>806,623</b>	<b>1,115,815</b>	<b>123,173</b>	<b>1,216,455</b>	<b>3,407,506</b>
<b>Total assets</b>	<b>106,663</b>	<b>38,777</b>	<b>806,623</b>	<b>1,115,815</b>	<b>123,173</b>	<b>1,216,455</b>	<b>3,407,506</b>
<b>Current Liabilities</b>							
<b>Current liabilities</b>							
Accounts payable	10,450.00	4,651.00	19,569.00	84,093.00	18,303.00	136,518.00	273,584
Accruals	8,300.00	-	61,755.00	39,979.00	-	10,997.00	121,031
Other current liabilities	-	1.00	-	3,921.00	1.00	3,025.00	6,948
<b>Total current liabilities</b>	<b>18,750</b>	<b>4,652</b>	<b>81,324</b>	<b>127,993</b>	<b>18,304</b>	<b>150,540</b>	<b>401,563</b>
<b>Equity</b>							
Accumulated funds	87,913	34,125	725,299	987,822	104,869	1,065,915	3,005,943
<b>Total liabilities and equity</b>	<b>106,663</b>	<b>38,777</b>	<b>806,623</b>	<b>1,115,815</b>	<b>123,173</b>	<b>1,216,455</b>	<b>3,407,506</b>

THE  
PACKAGING  
FORUM

